

# A reconnection-driven magnetic flux cancellation and a quiet Sun Ellerman bomb

Anjali. J. Kaithakkal<sup>1</sup>,<sup>\*</sup> J. M. Borrero,<sup>2</sup> A. Pastor Yabar<sup>3</sup> and J. de la Cruz Rodríguez<sup>3</sup>

<sup>1</sup>*Aryabhata Research Institute of Observational Sciences, Nainital, Uttarakhand 263001, India*

<sup>2</sup>*Leibniz Institute for Solar Physics, Schöneckstrasse 6, D-79104 Freiburg, Germany*

<sup>3</sup>*Institute for Solar Physics, Department of Astronomy, Stockholm University, AlbaNova University Centre, SE-106 91 Stockholm, Sweden*

Accepted 2023 March 9. Received 2023 February 14; in original form 2022 October 21

## ABSTRACT

The focus of this investigation is to quantify the conversion of magnetic to thermal energy initiated by a quiet Sun cancellation event and to explore the resulting dynamics from the interaction of the opposite-polarity magnetic features. We used imaging spectroscopy in the  $H\alpha$  line, along with spectropolarimetry in the Fe I 6173 Å and Ca II 8542 Å lines from the Swedish Solar Telescope (SST) to study a reconnection-related cancellation and the appearance of a quiet Sun Ellerman bomb (QSEB). We observed, for the first time, QSEB signature in both the wings and core of the Fe I 6173 Å line. We also found that, at times, the Fe I line-core intensity reaches higher values than the quiet Sun continuum intensity. From FIRTEZ-dz inversions of the Stokes profiles in Fe I and Ca II lines, we found enhanced temperature, with respect to the quiet Sun values, at the photospheric ( $\log \tau_c = -1.5$ ;  $\sim 1000$  K) and lower chromospheric heights ( $\log \tau_c = -4.5$ ;  $\sim 360$  K). From the calculation of total magnetic energy and thermal energy within these two layers, it was confirmed that the magnetic energy released during the flux cancellation can support heating in the aforesaid height range. Further, the temperature stratification maps enabled us to identify cumulative effects of successive reconnection on temperature pattern, including recurring temperature enhancements. Similarly, Doppler velocity stratification maps revealed impacts on plasma flow pattern, such as a sudden change in the flow direction.

**Key words:** Sun: photosphere – Sun: chromosphere – Sun: magnetic fields.

## 1 INTRODUCTION

Ellerman bombs (EBs) are transient line-wing brightenings with unaffected absorption at the line core in the  $H\alpha$  and other Balmer lines, which were first reported by Ellerman (1917). Since then their characteristics have been extensively investigated using observations (see Rutten et al. 2013, for a review on EBs). EBs are generally observed in emerging flux regions or between evolving interspot regions (Georgoulis et al. 2002; Watanabe et al. 2008; Reid et al. 2016, and references therein). They are reported to occur at magnetic flux cancellation sites (Matsumoto et al. 2008; Bello González, Danilovic & Kneer 2013; Nelson et al. 2013; Reid et al. 2016) and are considered to be driven by photospheric magnetic reconnection (Watanabe et al. 2011; Vissers, Rouppe van der Voort & Rutten 2013; Vissers et al. 2019).

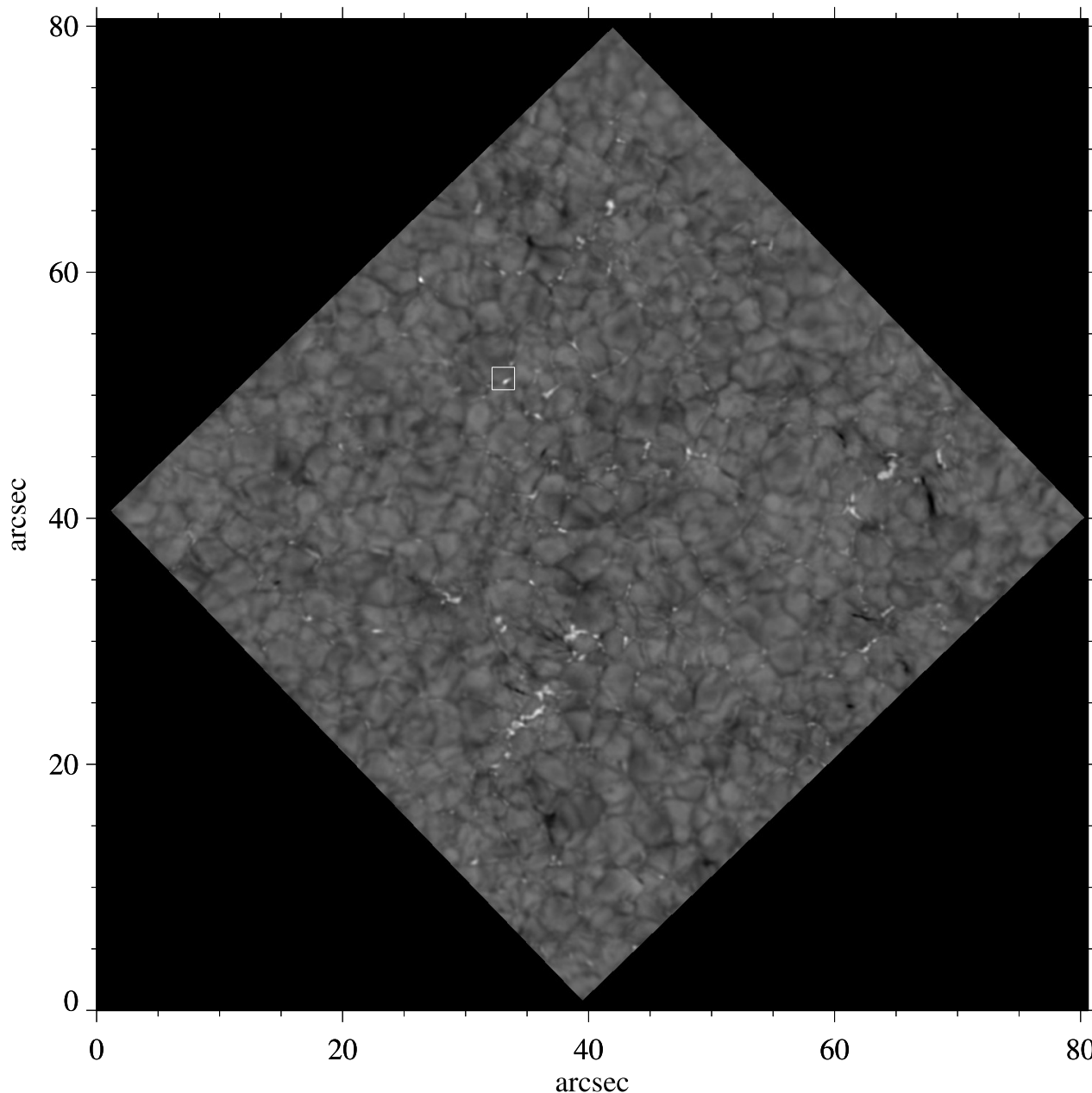
The first observational report on the quiet Sun (QS) counterpart of the EBs, the quiet Sun Ellerman bombs (QSEBs), was presented by Rouppe van der Voort, Rutten & Vissers (2016). QSEBs also, like EBs, are observed to be characteristic of photospheric reconnection (Rouppe van der Voort et al. 2016; Shetye et al. 2018; Joshi, Rouppe van der Voort & de la Cruz Rodríguez 2020). Shetye et al. (2018) found that in addition to  $H\alpha$  line-wing enhancement, QSEBs display a rise in the Ca II 8542 Å line core and line wing and a corresponding temperature increase in the upper photosphere. In contrast to EBs,

QSEBs are shown to have lower intensity enhancement in the  $H\alpha$  line wing,  $\sim 10$ – $20$  per cent with respect to the background intensity (Shetye et al. 2018). QSEB signatures are also observed in the cores of Si IV 1393 Å and Si IV 1403 Å, and wings of C II and Mg II (Nelson et al. 2017).

Numerical modeling, using three-dimensional radiative magneto-hydrodynamic simulations, was successful in recreating the observed spectral signatures of EBs (Nelson et al. 2013; Danilovic 2017; Hansteen et al. 2017, 2019) and QSEBs (Danilovic 2017), and in establishing that both phenomena are caused by photospheric magnetic reconnection. Using flux emergence simulations, Hansteen et al. (2017, 2019) showed that EBs are triggered by reconnection between U-shaped magnetic field lines. On the other hand, Danilovic (2017) showed EBs that form in  $\Omega$ -shaped field topology, using simulation of magnetic reconnection between an emerging magnetic field and the background magnetic field. Danilovic (2017) also found that the flame-like morphology of EBs is visible only in limbward viewing and that in disc centre observations they will be hard to be discerned from bright network magnetic features.

Magnetic field reconnection is at the heart of a majority of the dynamic and/or violent phenomena that we witness on the Sun. Magnetic flux cancellations, an observational signature of reconnection, occur in both active and quiet regions of the Sun. In this work, we present such an event driven by a QS small-scale reconnection-related flux cancellation, namely the QSEB. We study in detail the temporal evolution of various quantities, like wing and core intensities, integrated Stokes  $V$ , and linear polarization

\* E-mail: [anjalijohnk@gmail.com](mailto:anjalijohnk@gmail.com)



**Figure 1.** Full FOV at  $-1.2 \text{ \AA}$  from the  $H\alpha$  line core. The white box indicates our  $5.95 \text{ arcsec} \times 5.95 \text{ arcsec}$  region of interest. The frame is taken at 9:49:51 UT.

signals, in the region where we observe the event. We then used spectropolarimetric inversion to quantify the associated physical parameters like vector magnetic field, line-of-sight (LOS) velocity, and temperature to understand the magnetic field line topology, the plasma flow pattern, and the amount of local plasma heating driven by the event under consideration. We also estimated the total magnetic and thermal energy caused by the process to gain an understanding of the energy balance involved.

## 2 OBSERVATIONS AND ANALYSIS

A QS data set at the disc centre was acquired on 2019 April 24, with the CRISP Imaging SpectroPolarimeter (Scharmer et al. 2008) at the 1-m Swedish Solar Telescope (SST; Scharmer et al. 2003).

CRISP provided imaging spectropolarimetry (de Wijn et al. 2021) in the photospheric Fe I 6173  $\text{\AA}$  line (effective Landé factor  $g_{\text{eff}} = 2.5$ ) at 15 spectral points between  $\pm 245 \text{ m\AA}$  in step size of  $35 \text{ m\AA}$ . Co-spatial and nearly simultaneous spectropolarimetric data (i.e. all four Stokes parameters) in the Ca II 8542  $\text{\AA}$  line (effective Landé factor  $g_{\text{eff}} = 1.10$ ) were recorded at 20 spectral line positions with varying step sizes:  $75 \text{ m\AA}$  close to the line core and  $100 \text{ m\AA}$  in the inner line wings, plus a far wing point at  $+2.4 \text{ \AA}$ . Simultaneous spectroscopic data (i.e. Stokes  $I$  only) in the Balmer  $H\alpha$  6563  $\text{\AA}$  line at 25 spectral points between  $\pm 1.2 \text{ \AA}$  with a step size of  $100 \text{ m\AA}$  were also recorded for the same region. The data set has a mean cadence of 28.2 s.

CRISP has an image scale of  $0.059 \text{ arcsec}$  per pixel and covers a field-of-view (FOV) of  $\sim 55 \text{ arcsec} \times 55 \text{ arcsec}$  (see Fig. 1). The data calibration was carried out using the SSTRED pipeline (de la

Cruz Rodríguez et al. 2015; Löfdahl et al. 2021) and was further processed with the multi-object multiframe blind de-convolution code (MOMFBD, van Noort, Rouppe van der Voort & Löfdahl 2005).

With the help of the Fourier Transform Spectrometer (FTS; Neckel 1999) atlas in the Ca II region, we found that the wing intensity recorded at  $+2.4 \text{ \AA}$  from the line core is only 76 per cent of the real continuum. We did the same analysis for the H $\alpha$  line and obtained that the wing intensity at  $\pm 1.2 \text{ \AA}$  from the line core is only 81 per cent of the continuum. All these corrections are applied to the Stokes profiles of respective spectral lines. The Stokes profiles are then normalized to the spatiotemporal average QS intensity,  $\langle I_{QS} \rangle$ , of respective spectral lines.

The noise level ( $\sigma$ ) in Stokes  $Q$ ,  $U$ , and  $V$ , determined using the polarization signals at the farthest wavelength points from line core, are  $1.9 \times 10^{-3}$ ,  $1.6 \times 10^{-3}$ , and  $1.7 \times 10^{-3}$ , respectively, for the Ca II 854.2 nm line and  $1.4 \times 10^{-3}$  for the Fe I 617.3 nm line, in units of  $\langle I_{QS} \rangle$ .

## 2.1 Region of Interest (ROI)

We chose an ROI of size  $5.95 \text{ arcsec} \times 5.95 \text{ arcsec}$  (white box in Fig. 1), which covered a small-scale magnetic flux cancellation event. The event apparently lasted for about 39.0 min, by the end of which the smaller magnetic feature, which is of negative polarity, went below our threshold of  $3 \sigma$  value of Stokes  $V$  noise. We identified the opposite-polarity features and tracked them, from the Fe I 6173  $\text{\AA}$  line Stokes  $V$  maps, based on spatial overlap (Kaithakkal & Solanki 2019). Our code first identified the negative-polarity patch, spatially close to the positive patch, 17 min after the positive-polarity patch was detected. So this cancellation event appears to be resulting from the interaction between a relatively big existing positive-polarity feature and a rather small emerging negative-polarity feature.

A number of ancillary quantities, which will be very useful later, were derived from the observed Stokes vector. These are (a) continuum maps of Fe I 6173  $\text{\AA}$  line constructed by averaging Stokes  $I$  values at  $\pm 0.245 \text{ \AA}$ , (b) H $\alpha$  wing intensity maps made from the mean of intensities at  $\pm 1.2 \text{ \AA}$  from the line core, and (c) the wavelength-integrated absolute value of the circular polarization  $V$  as well as wavelength-integrated linear polarization ( $LP = \sqrt{Q^2 + U^2}$ ) maps for the Fe I 6173  $\text{\AA}$  and Ca II 854.2 nm line.

## 2.2 FIRTEZ-dz Inversion

In order to extract the physical parameters of the solar atmosphere from the observations of the Stokes vector described above, we employ the FIRTEZ-dz inversion code (Pastor Yabar, Borrero & Ruiz Cobo 2019). FIRTEZ-dz calculates the gas pressure  $P_g$  consistently with the magnetohydrostatic equations including the effects of the Lorentz force (Borrero, Pastor Yabar & Ruiz Cobo 2021). This is unlike inversions codes such as SIR (Ruiz Cobo & del Toro Iniesta 1992), SPINOR (Frutiger et al. 1999), NICOLE (Socas-Navarro et al. 2015), SNAPI (Milić & van Noort 2018), and STiC (de la Cruz Rodríguez et al. 2019), where the gas pressure  $P_g$  is obtained under the assumption of hydrostatic equilibrium. Because of this, FIRTEZ-dz is capable of working directly in the geometrical scale  $z$  instead of the continuum optical-depth  $\tau_c$ .

In our inversions in this work, the initial atmosphere is the VALC model (Vernazza, Avrett & Loeser 1981), from where we take  $T(z)$ ,  $P_g(z)$ , and  $\rho(z)$  between  $z = [0-1536] \text{ km}$  interpolated to an equidistant  $z$ -grid with  $\Delta z = 12 \text{ km}$  and expanded by assuming a plane-parallel atmosphere into the entire  $(x, y, z)$  domain. Since VALC does not include any values for either the magnetic field vector  $\mathbf{B}(z)$

or the LOS velocity  $v_{\text{los}}(z)$ , these parameters are initially estimated at each  $(x, y)$  pixel by applying the weak-field approximation to the observed Stokes parameters in the Fe I 6173  $\text{\AA}$  line (Jefferies & Mickey 1991) and by calculating the centre of gravity of Stokes  $I$  in the same spectral line. The values thus obtained for  $\mathbf{B}$  and  $v_{\text{los}}$  are initially considered to be constant with  $z$ .

The modifications to the physical parameters at each iteration step of the inversion process at the selected  $z$  locations (i.e. nodes) are as follows: 64 for  $T(z)$ , 32 for  $v_{\text{los}}(z)$ , and 2 for each of the three components of the magnetic field vector  $B_x(z)$ ,  $B_y(z)$ , and  $B_z(z)$ . Each node is considered a free parameter during the inversion process. The large number of free parameters in the temperature is needed so as to ensure that the geometrical distance between the  $\log \tau_c = 0$  level and the nearest node is not too large, otherwise the inversion finds it difficult to correctly reproduce the observed continuum intensity in the observations. In order to avoid lack of convergence as a consequence of the large number of free parameters employed, we use a Tikhonov regularization (A. N. Tikhonov 1995) that penalizes those solutions where the vertical derivatives of the physical parameters are too large (de la Cruz Rodríguez et al. 2019). During the inversion, different weights  $w$  are given to each of the four components of the Stokes vector:  $\mathbb{I} = (I, Q, U, V)$ . In our case, we used:  $w_1 = 1$ ,  $w_2 = 4$ ,  $w_3 = 4$ , and  $w_4 = 4$ , for Stokes  $I$ ,  $Q$ ,  $U$ , and  $V$ , respectively.

FIRTEZ-dz typically operates under the assumption of local thermodynamic equilibrium (LTE). This is indeed a reasonable assumption for the Fe I 6173  $\text{\AA}$  line. However, in order to improve the inference of the temperature stratification in the upper photosphere and lower chromosphere, it is required to consider non-LTE effects in the treatment of the Ca II 8542  $\text{\AA}$  line (see, e.g. Socas-Navarro, Trujillo Bueno & Ruiz Cobo 2000; de la Cruz Rodríguez et al. 2012). Therefore, in this paper, the FIRTEZ-dz inversion code has been modified to account for deviations from LTE by implementing departure coefficients for the upper,  $\beta_u$ , and lower levels,  $\beta_l$ , involved in the electron transition that gives rise to a particular spectral line (i.e. Ca II 8542  $\text{\AA}$ ). To this end, we follow the formulation by Socas-Navarro, Ruiz Cobo & Trujillo Bueno (1998) to determine the line opacity and source function, as well as their derivatives with respect to physical parameters, under the so-called *fixed departure coefficient* (FDC) approximation whereby the departure coefficients are not modified during the inversion even though the physical parameters (mainly the temperature) are being modified. Under this approximation, the departure coefficients and therefore the level populations under non-LTE are determined only once at the beginning of the inversion process described above. This is therefore a first-order non-LTE rather than a full non-LTE inversion.

The departure coefficients are determined for the VALC model by solving the statistical equilibrium equations with a Ca II atomic model that includes five bound states and one continuum level. The Gotian diagram of the atomic model can be found in Shine & Linsky (1974, see Fig. 1). We note that the equation-of-state that is used to determine the electron pressure is still solved under LTE. The angular integration that is needed to calculate the mean intensity of the radiation field is performed by assuming that the 1D model is plane-parallel and uses 10 ray paths with five angles and two directions (incoming and outgoing) for each angle.

This inversion code is applied to the observations of the Fe I 6173  $\text{\AA}$  and Ca II 8542  $\text{\AA}$  only. The H I 6563  $\text{\AA}$  is neglected at this point for two main reasons. The first one is that for this spectral line we do not have polarization signals (only Stokes  $I$ ), and the second

**Table 1.** Spectral lines and their associated atomic parameters used in the inversion.

$\lambda_0$ [nm]	$\Delta\lambda$ [mÅ]	$n_\lambda$	$e_{\text{low}}$	$e_{\text{upp}}$	$\log_{10} g f$	$E_{\text{low}}$ [eV]	$\alpha$	$\sigma/a_0^2$
Fe I 617.33	35	15	$5.0P_{1,0}$	$5.0D_{0,0}$	-2.880	2.223	0.266	280.57
Ca II 854.21	100	17	$2.0D_{2,5}$	$2.0P_{1,5}$	-0.360	0.000	0.275	291.00

*Notes.*  $\lambda_0$  is the central wavelength for the electronic transition associated with the spectral line.  $\Delta\lambda$  is the pixel size in mÅ,  $n_\lambda$  is the number of wavelengths used for that spectral line.  $e_{\text{low}}$  and  $e_{\text{upp}}$  are the electronic configurations of the lower and upper energy levels, respectively.  $E_{\text{low}}$  is the excitation potential (in eV) of the lower energy level. The atomic data for Fe I have been adopted from Nave et al. (1994), whereas for Ca II we employ (Edlén & Risberg 1956) (see also Atomic Spectra Database – ASD – of the National Institute of Standards and Technology – NIST).  $\alpha$  and  $\sigma/a_0^2$  are the velocity exponent and collision cross-section parameters, respectively, as they are defined in Anstee, Barklem, and O’Mara collision theory for the broadening of metallic lines by neutral hydrogen collisions (Anstee & O’Mara 1995; Barklem & O’Mara 1997; Barklem, O’Mara & Ross 1998).

one is that FIRTEZ-dz considers only 1D radiative transfer, while the aforementioned spectral line is heavily affected by 3D radiative transfer effects (Leenaarts, Carlsson & Rouppe van der Voort 2012).

The inversion is performed considering the transmission profiles for the CRISP instrument for each spectral line, Fe I and Ca II, independently. The transmission profiles are theoretically calculated by considering the individual contribution of each etalon from the measured wavelength-dependent reflectivity and distance between plates (Scharmer 2006; de la Cruz Rodríguez et al. 2015). In addition, before the inversion, the Stokes vector in the Ca II 8542 Å line is re-sampled from the original grid described above to a 100 mÅ evenly spaced wavelength grid from -800 mÅ to +800 mÅ with a total of 17 wavelength points. The Fe I 6173 Å spectral line is not re-sampled because it was already recorded with a constant step size. The atomic data for the spectral lines inverted by FIRTEZ-dz are presented in Table 1.

### 2.3 Comments on the 180° resolution

Although it has not been mentioned above, Borrero et al. (2021) (see their Fig. 2) indicates that before the gas pressure is computed via the application of Magnetohydrostatic (MHS) equilibrium, it is necessary to correct the 180° ambiguity that affects the  $B_x(x, y, z)$  and  $B_y(x, y, z)$  components of the magnetic field inferred by FIRTEZ-dz. This is typically done via the non-potential field calculation (NPFC; Georgoulis 2005). Unfortunately, the QS is characterized by low signal-to-noise ratios in the linear polarization (i.e. Stokes  $Q$  and  $U$ ; see Section 2), thereby hindering the 180°-ambiguity correction. This is clear from the moment we study the time consistency in the corrected  $B_x$  and  $B_y$ . The NPFC method yields disambiguation such that the horizontal field at a given location oftentimes changes direction between consecutive time frames. To address this issue, we select  $\mathbf{B}(x, y, z, t = 9:46:58 \text{ UT})$ , where the NPFC yields a spatially consistent result. From there we disambiguate, using a simple acute-angle method (Cheung 2008), the frame at  $t - \Delta t$ . Once  $t - \Delta t$  is corrected, we use this to correct the 180°-ambiguity at  $t - 2\Delta t$ . We proceed in this fashion until we reach  $t = 0$ . We then restart again from  $\mathbf{B}(x, y, z, t = 9:46:58 \text{ UT})$  and move forward in time:  $t + \Delta t$ ,  $t + 2\Delta t$ , and so forth.

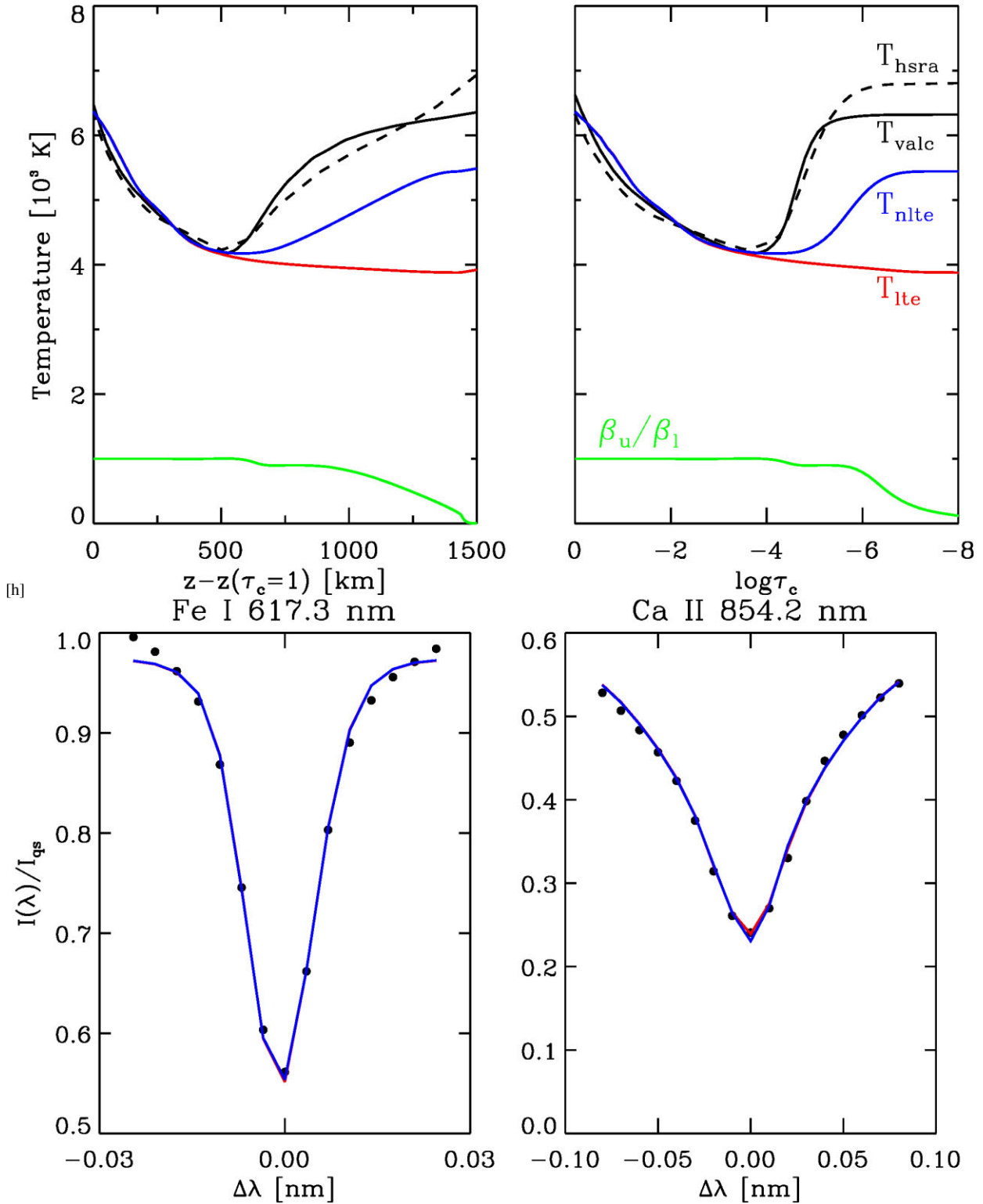
### 2.4 Average QS temperature: LTE versus non-LTE inversion

In Kaithakkal et al. (2020), we attempted to assess the temperature enhancement during a reconnection event in the upper photosphere (i.e. temperature minimum) close to  $\log \tau_c \approx -3$  from the inversion, under LTE, of the Si I 10 827 Å spectral line. However, this spectral

line already shows important deviations from LTE at this height (see Fig. 6 in Shchukina, Sukhorukov & Trujillo Bueno 2017) and therefore the temperature estimations were only approximate. As already mentioned, in this paper we have decided to include a first-order non-LTE treatment by including FDCs for the Ca II 8542 Å line. To demonstrate the capability of FIRTEZ-dz in retrieving more accurate temperatures in the upper photosphere and lower chromosphere, we show in Fig. 2 the average temperature, as a function of geometrical height  $z$  (upper-left) and optical depth (upper-right), obtained from the inversion of all spatial pixels in the region of interest (Section 2.1) at all observed times. Therefore, this average was constructed from the average of more than 1 million Stokes  $I(\lambda)$  profiles. The results from this approximate non-LTE inversion are shown in blue, whereas results under LTE are shown in red. For comparison purposes, we show also  $T(z)$  from two semi-empirical models: HSRA (dashed black line; Gingerich et al. 1971) and VALC (solid black line; Vernazza et al. 1981). On the one hand, the temperature retrieved from the LTE inversion shows a monotonic decrease without either temperature minimum or chromospheric temperature increase. Our non-LTE inversion, on the other hand, features both temperature minimum and chromospheric increase for  $z - z(\tau_c = 1) > 500 \text{ km}$  or  $\log \tau_c < -4$ . The reason the inversion infers a temperature increase in the chromosphere is that the ratio between the upper and lower departure coefficients in the Ca II 8542 Å line drops below 1:  $\beta_u/\beta_l < 1$  (see green lines in the upper panels of Fig. 2). Since the source function is roughly proportional to  $S \propto \beta_u/\beta_l \exp[-hc/2KT]$ , as the ratio  $\beta_u/\beta_l$  drops, the temperature must increase so as to yield the same amount of emitted energy per unit time (s), per unit area (m<sup>2</sup>), and per solid-angle unit (steradian) as in the LTE case.

We note that, despite having very different temperature stratifications,  $T(z)$  or  $T(\tau_c)$ , both LTE (red) and non-LTE (blue) inversions are equally capable of fitting the observed (spatially averaged) intensity profiles of both spectral lines in Table 1.

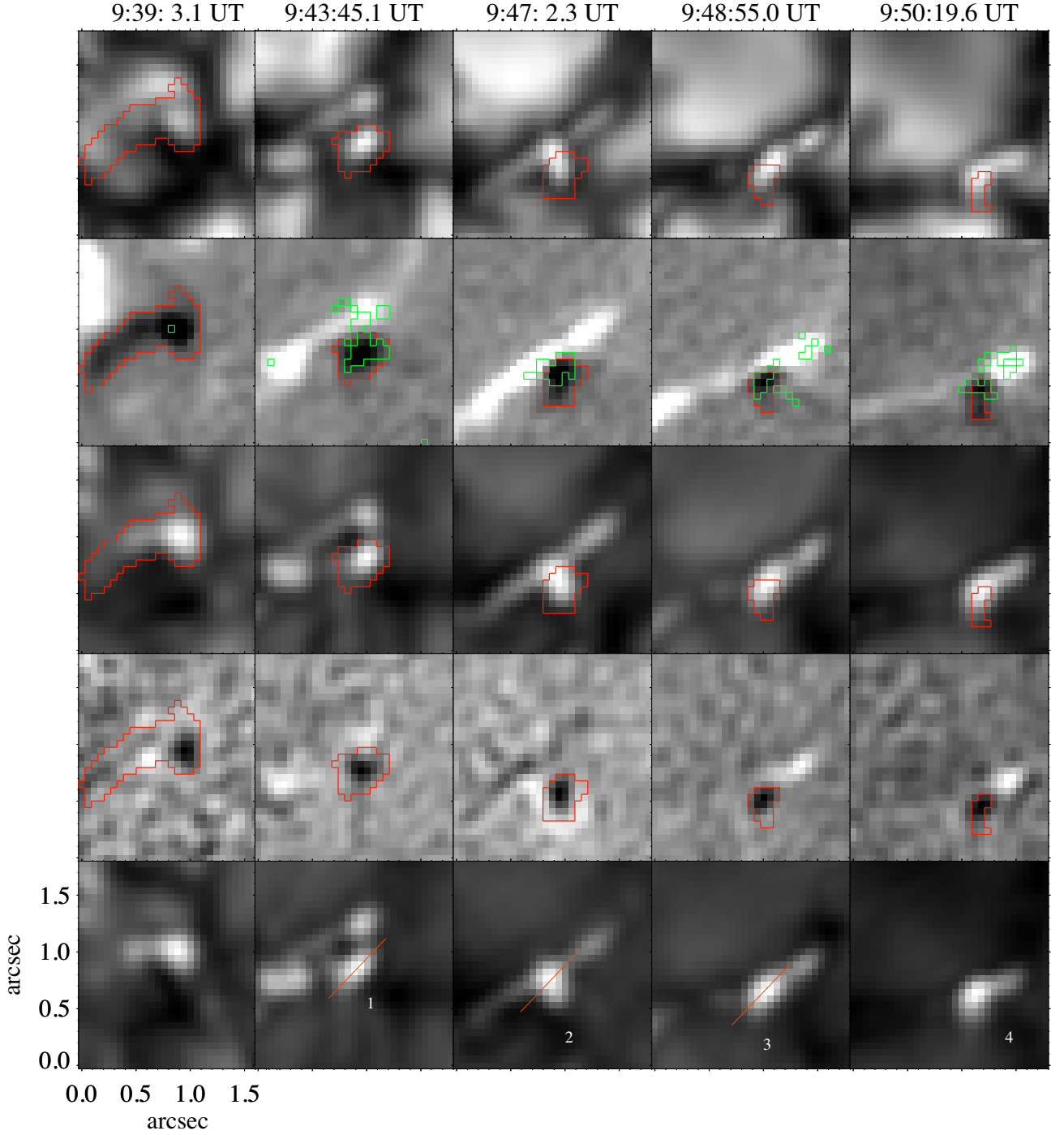
Although the chromospheric temperature from the approximate non-LTE inversion is much closer to that of the semi-empirical models than that from the LTE inversion, it is still somewhat lower. There are several possible reasons for this. One reason is that, although the source function is modified to include non-LTE effects, the Saha equation (i.e. LTE) is still employed to determine the electron density (Section 2.2). The Saha equation tends to overestimate, compared to non-LTE, the electron density and therefore LTE needs lower temperatures to yield the same ionization level (da Silva Santos, de la Cruz Rodríguez & Leenaarts 2018; Vissers et al. 2019). Another reason is, of course, the fact that we are employing FDCs, namely those obtained from the VALC model,



**Figure 2.** *Upper panels:* average temperature stratification as a function of geometrical height  $z$  (left) and optical depth  $\tau_c$  (right) obtained from the inversion of all individual Stokes profiles in the selected ROI (Section 2.1). Red and blue curves correspond to the LTE and non-LTE inversions, respectively. Solid-black and Dashed-black lines display the temperature stratifications from the VALC and HSRA models, respectively. *Bottom panels:* average-observed intensity profiles ( $I(\lambda)$ ; filled circles) and best-fitting profiles produced by the LTE (red) and non-LTE (blue) inversions for the Fe I (left) and Ca II lines.

in our inversions. This approach limits the accuracy of our inferred temperatures. We estimated the error in the temperature, introduced by our approximate first-order non-LTE treatment, by restarting the inversion process with updated departure coefficients, obtained from

the final models after the first inversion, on a small  $10 \times 10$  pixel region over a limited number of timesteps. We then compared the resulting temperatures with those obtained with the FDCs from the VALC model. The results indicate that the temperature remains the



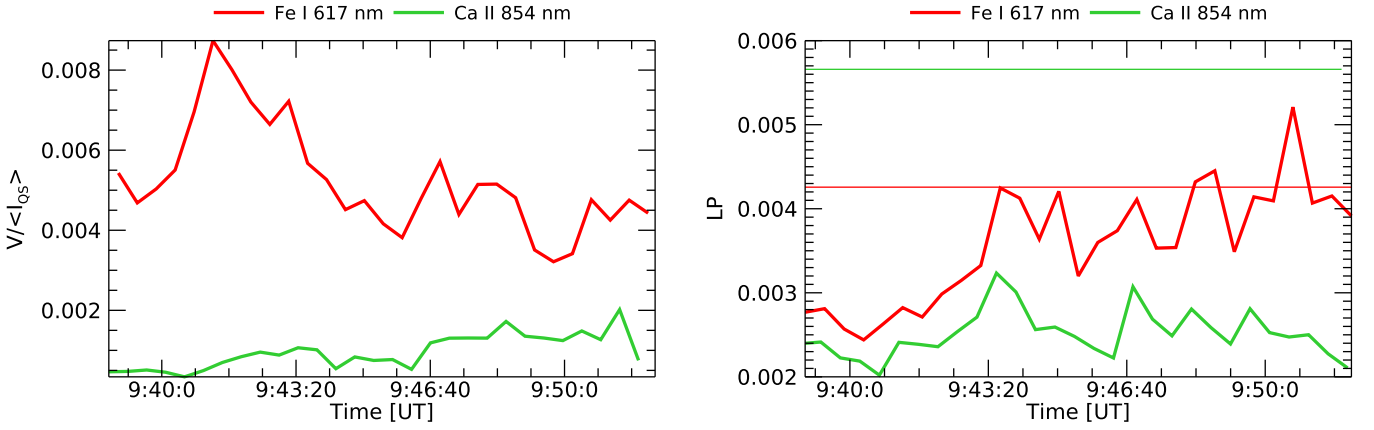
**Figure 3.** From top to bottom: continuum intensity in Fe I 6173 Å (first row), Stokes V in Fe I 6173 Å with the green contours outlining regions with linear polarization signal greater than  $3\sigma$  value in this line (second row), wing intensity in Ca II 8542 Å (third row), Stokes V in Ca II 8542 Å (fourth row), and finally, blue wing intensity in H $\alpha$  at  $-1.2$  Å from the line core (fifth row). The red contour outlines the negative-polarity patch which is skipped in the last row to provide clear visibility of the QSEB’s presence. The red cuts in the H $\alpha$  maps where brightening enhancements denoted as 1, 2, and 3 are used to make maps given in Figs 10, 11, and 12. The direction of such cuts is referred to as  $L$ . A movie of the event evolution in the continuum and Stokes V of the Fe I line and in the blue wing intensity of H $\alpha$  line at  $-1.2$  Å is available online.

same up to  $\log \tau_c = -3.5$ , but that fixing the departure coefficients to those from VALC systematically underestimates the temperatures above this layer. The underestimation is of about 100 K at  $\log \tau_c = -4$  and quickly raises towards higher layers. At the highest point considered in our analysis,  $\log \tau_c = -4.5$  (see Section 3.2), the underestimation is already 500 K.

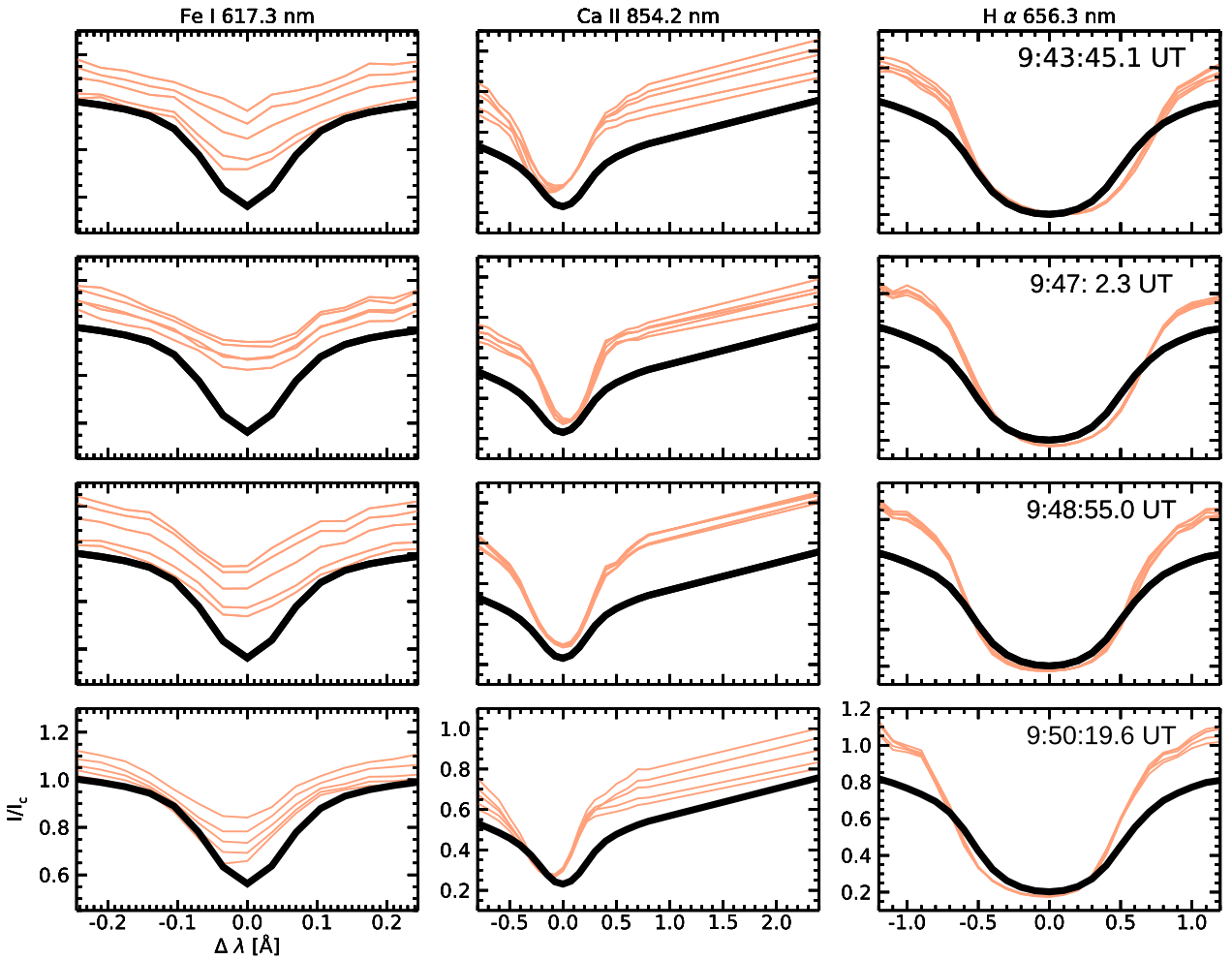
### 3 RESULTS

#### 3.1 Qualitative Description

Out of the 39.0 min-long apparent lifetime of the negative-polarity feature involved in the cancellation event, we focus on the last 13.15



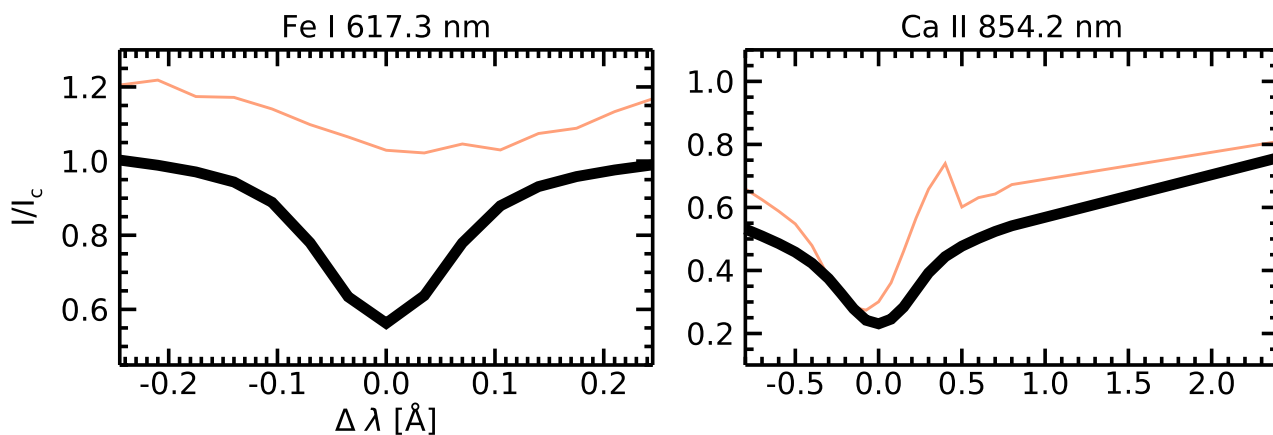
**Figure 4.** Plots in red and green represent curves for Fe I and Ca II, respectively. Left: evolution of Stokes V; Right: linear polarization (LP) – the dotted lines represent respective  $3\sigma$  values.



**Figure 5.** From left to right: Stokes I profiles of Fe I, Ca II, and H $\alpha$  at different time steps corresponding to the numbered brightenings in Fig. 3. For all the plots, the black curves represent the spatiotemporal mean QS profile for the respective spectral lines. And the orange curves are the profiles from the five-pixel region (see text for details) at the corresponding time step. The Ca II profiles are plotted in their original observed spectral range. The timestamp in the rightmost plot is the time at which the blue wing of H $\alpha$  is recorded.

min of evolution in the present work. The presence of a QSEB during the event is evident from our observation. We note that the H $\alpha$  spectral line exhibits enhanced inner and outer wings with an unaffected line core (see right column of Fig. 5) and that the wing

intensities rise recurrently during cancellation (see last row of Fig. 3). The characteristic flame-like morphology of the QSEB is not visible in our data as the observation is taken at the disk centre (see Danilovic 2017, for details).



**Figure 6.** Left: in red is the Stokes  $I$  profile of Fe I at 9:44:9 UT. Right: Ca II Stokes  $I$  profile at 9:40:14 UT taken from the same pixel from which the profile on the left panel is made. In both cases, the profiles in black represent the spatiotemporal mean QS profile for the respective spectral lines.

The evolution of the event is demonstrated in Fig. 3 using continuum/wing intensity and wavelength-integrated Stokes  $V$  maps, created from the observed spectral lines, at different timesteps. From the Fe I continuum intensity map (first row), we see that the intensity within the negative patch rises before finally falling off towards the end. The Stokes  $V$  map (second row) clearly shows that the negative patch is interacting with a relatively bigger positive patch that splits and merges during the evolution, and the negative patch undergoes a steady and continuous shrinkage with time. We also observe significant linear polarization in the Fe I line between the interacting magnetic features, which indicates their magnetic connectivity. From the third row, it is clear that the Ca II wing intensity at  $+2.4 \text{ \AA}$  from the line core is also rising and falling during the event. Stokes  $V$  maps in the Ca II line (fourth row) display clear signals above the  $3\sigma$  level. However, these maps look rather diffused and the evolution is uneventful. Maps of the H $\alpha$  wing intensity at  $-1.2 \text{ \AA}$  (i.e. blue-wing) from line core (fifth row) show the presence of enhanced brightness. We denote some of these regions of enhanced brightness at different time steps as 1, 2, 3, and 4. While 1 is fully covered by the negative patch contour, 2, 3, and 4 fall mostly into the positive-polarity patch region. The brightening enhancement is the highest for the 4th one ( $t = 9:50:19.6 \text{ UT}$ ) with the H $\alpha$  blue wing intensity reaching values almost 40 per cent higher than the corresponding mean QS value. The other three regions feature somewhat smaller intensity enhancements: about 30–35 per cent larger than the average QS signal.

Fig. 4 presents the temporal evolution of Stokes  $V$  and LP signals of the negative patch. We chose the negative-polarity patch as the representative feature as it stayed compact (i.e. it did not break into several patches or interact with other like-polarity features) during the cancellation event, thus making it easier to track its evolution. We took the mean of the wavelength integrated Stokes  $V$  signal at each timestep within the red contour in Fig. 1 to present its variation over time. The left panel shows that the wavelength-integrated Stokes  $V$  signal from the Fe I line reaches a maximum at about 9:40:48 UT followed by a declining phase, while the signal from the Ca II line does not show a similar trend. The decrease in the Fe I Stokes  $V$  signal could be the result of magnetic flux cancellation due to the interaction of the opposite polarities. Now, the LP signal variation (right panel) from the Ca II line stays below its  $3\sigma$  value throughout the concerned period. The LP signal of the Fe I line first appears above the  $3\sigma$  value  $\sim 7$  min later after the initiation of flux cancellation and peaks 9.4 min later. The decrease in Stokes  $V$  followed by an increase in LP indicates the presence of

an inclined field line connectivity between the interacting opposite polarity magnetic features (see the second row of Fig. 3 as well). Such an increase in LP signal during small-scale magnetic flux cancellation events occurred in the neighbourhood of an evolving active region is reported in Kaithakkal & Solanki (2019). The temporal behaviour of decreasing  $V$  while LP increase is consistent with the idea of the magnetic field of opposite  $B_z$  undergoing reconnection and becoming more horizontal as reconnection takes place. Since the interaction is happening between an emerging magnetic feature and an existing one (see Section 2.1) of opposite polarity, we suggest that the reconnection is occurring via the formation of a magnetic loop, although its precise shape cannot be determined from our observations (see Section 3.3).

We chose a five-pixel region – the pixel which shows the highest intensity on the blue wing of H $\alpha$  and four pixels around it – to check the spectral profiles of the three observed lines during the four peaks indicated in Fig. 3 (fifth row). The signature of QSEBs is coded into these profiles as shown in Fig. 5 from the top (region 1) to the bottom panels (region 4). Each of the orange curves represents the spectral profiles of each of the five pixels in the selected region. The left-most column in Fig. 5 shows the Stokes  $I$  profiles of Fe I line in comparison with the mean QS profile (solid black line). When compared to the corresponding QS signal, the continuum and core intensities of the Fe I line increase by more than 20 per cent and 70 per cent, respectively, during cancellation. And at times, the core of the Fe I line (left panel in Fig. 6) even surpasses the QS continuum. This implies that the temperature where the core of Fe I is formed (say i.e.  $\log \tau_c \approx -2$ ) is as high as the temperature of the QS at  $\log \tau_c = 0$  (i.e.  $\approx 6400 \text{ K}$ ). We observe shifts in the Fe I line profiles as well – blue shifted at 9:50 UT (first column on the fourth row of Fig. 5). To the best of our knowledge, this is the first report of a QSEB event’s imprint in the Fe I 6173  $\text{\AA}$  line. Even though three of the data sets used in Rouppe van der Voort et al. (2016) had similar spectral sampling with almost the same wavelength range for the Fe I 6173  $\text{\AA}$  line, they reported the absence of any QSEB-related signal in this neutral iron line.

The middle column in Fig. 5 presents the evolution of Ca II Stokes  $I$  profiles at the four selected times. The wing intensity at  $2.4 \text{ \AA}$  rises by more than 40 per cent above the QS value during the cancellation. Enhancements in a similar range are found by Shetye et al. (2018) as well. Meanwhile, the line-core signal of Ca II becomes about 60 per cent higher than the QS core intensity. Another aspect we noticed in a few Stokes  $I$  profiles of the Ca II line is the emission-like humps on the red wing (see right panel of Fig. 6). The signal



of the strongest hump at this time is about 60–70 per cent higher than the QS value at the corresponding wavelength point. We also report that the Ca II Stokes  $I$  profiles are shifted at times when compared to the QS profile; for e.g. it shows a blueshift at 9:43:45 UT (top-middle column in Fig. 5). Such shifts and core enhancement in the Ca II line are also reported in the work by Shetye et al. (2018).

The rightmost column in Fig. 5 displays the  $H\alpha$  intensity profiles. As presented by Nelson et al. (2017), our observations also show the  $H\alpha$  spectral lines having enhanced inner and outer wings with an unaffected core. We also point out that the blue-wing of this spectral line has a higher intensity than the red-wing at all times. The  $H\alpha$  blue-wing intensity increases by almost 40 per cent compared to the QS value during the flux cancellation. This is higher than the 20 per cent enhancement reported by Shetye et al. (2018).

The continuum intensity of Fe I and wing intensity of  $H\alpha$  and Ca II averaged over the aforementioned five-pixel region is shown in the left-panel plot of Fig. 7. All three lines display multiple peaks, and the prominent peak of Fe I line leads that of Ca II and  $H\alpha$ . Shetye et al. (2018) also reported repetitive enhancements in the wings of  $H\alpha$  and Ca II (albeit at different wavelengths from ours). In their case, the Ca II peaks lead that of  $H\alpha$  in most cases. While their data set had a cadence of 8 seconds, our cadence is much slower (about 28 sec; see Section 2) and therefore we are unable to draw a similar conclusion.

The right panel of Fig. 7 shows the line-core intensity evolution of the Fe I, Ca II, and  $H\alpha$  lines. To improve the visibility of the peaks, we plotted the line-core intensity relative to its average QS value as a function of time. Like continuum/wing intensity plots, the line-core intensity also exhibits repetitive intensity enhancements.

Connecting the information provided by the plots in Figs 4 and 7, we can state qualitatively that the event under consideration is giving rise to multiple instances of local heating driven by reconnection-related magnetic-flux cancellation. Section 3.2 makes use of the results from the FIRTEZ-dz inversion runs to substantiate this proposition and quantify the physical parameters associated with the event under consideration.

### 3.2 Quantitative Results

Fig. 8 shows maps of LOS magnetic field (left), temperature (middle), and LOS Doppler velocity at  $\log \tau_c \approx -1.5$  for the same FOV as shown in Fig. 3. The  $B_{LOS}$  map includes an arrow field representing the ambiguity-corrected (Section 2.3) transverse field component. These arrows clearly show that the magnetic-field lines are indeed oriented at a tilted angle and that both polarities are magnetically connected. This is in agreement with the presence of LP signal between the opposite-polarity magnetic features as shown in the second row of Fig. 3. Now, the middle panel reveals that the temperature of the region, where we observe a QSEB, is also higher than the immediate surroundings. This region encompasses both polarities as well. From the Doppler velocity map (rightmost panel in Fig. 8), we see that the region covered by the QSEB has both upflow and downflow.

The change in the magnetic flux of the negative patch with time is presented in the left panel of Fig. 9. The magnetic flux peaks at 9:41:20 UT and from there more than 90 per cent of the negative-polarity flux deplete in less than 11 min. The flux cancellation rate is calculated to be  $\sim 6 \times 10^{14}$  Mx/s. Reid et al. (2016) have reported a flux cancellation rate in a similar range for EBs. Most of the cancellation rate is due to the area of the negative-polarity patch decreasing over time, with the average  $B_{LOS}$  changing a little over

time. We also determined the total magnetic energy in the height range between  $\log \tau_c = -1.5$  and  $\log \tau_c = -4.5$  using the equation:

$$E_B(t) = \frac{1}{8\pi} \oint_A \left\{ \int_{Z_1}^{Z_2} B^2(x, y, z, t) dz \right\} dx dy, \quad (1)$$

where  $A$  is the area of the negative patch at instant  $t$  which ranges from  $[10^{14} - 2.0 \times 10^{15}] \text{ cm}^2$ .  $Z_1$  and  $Z_2$  are the geometrical heights corresponding to  $\log \tau_c = -1.5$  and  $\log \tau_c = -4.5$ , respectively. For the considered height range ( $\Delta z = < Z_{\log \tau_c = -4.5} - Z_{\log \tau_c = -1.5} > \sim 430 \text{ km}$ )  $E_B$  of the negative patch varies between  $4 \times 10^{24}$  and  $2 \times 10^{26}$  erg. We found a systematic decline in the magnetic energy (not shown here) that presents an exactly similar trend shown by the magnetic flux of the negative patch (see left panel of Fig. 9).  $E_B$  peaks at 9:41:20 UT and loses 99.6 per cent of that value in about 11 min. We repeated the calculation for the heights covered between  $\log \tau_c = 0$  and  $\log \tau_c = -1.5$  ( $< Z_{\log \tau_c = -1.5} - Z_{\log \tau_c = 0.0} > \sim 230 \text{ km}$ ) and obtained magnetic energy of the negative patch in the range of  $[2 \times 10^{24} - 10^{26}] \text{ erg}$ . For a height range,  $\Delta z$ , of  $\sim 400 \text{ km}$ , Reid et al. (2016) obtained magnetic energies in the range of  $[10^{24} - 10^{25}] \text{ erg}$ . This is an order of magnitude lower than any of our estimations for  $E_B$ .

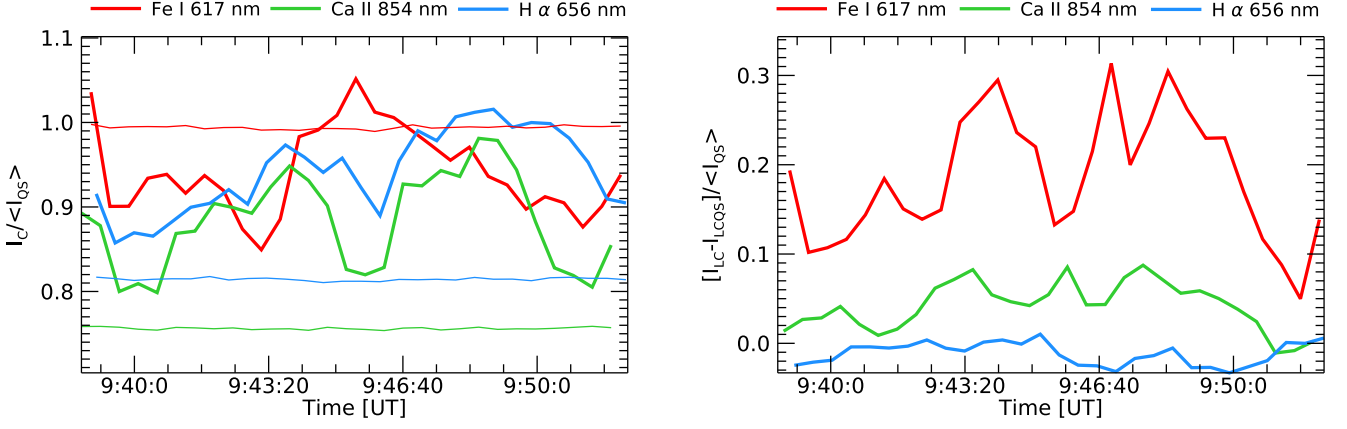
The evolution of temperature values at  $\log \tau_c = -1.5$  and at  $\log \tau_c = -4.5$  for the five-pixel region centred on the peak  $H\alpha$  blue wing intensity is shown in the right panel of Fig. 9. The curves present multiple peaks at both optical depths. The prominent peak in temperature at  $\log \tau_c = -1.5$  is  $\sim 1000 \text{ K}$  higher than the QS temperature at that instant (at 9:44:9 UT). The highest peak at  $\log \tau_c = -4.5$  (at 9:47:45 UT) is  $\sim 360 \text{ K}$  above the respective QS temperature. It is important to state here that in this paper we are mostly dealing with temperature differences, and, therefore, the systematic underestimation of real temperatures under the FDC approximation (see Section 2.4) cancels out to first order of approximation in our calculations. Finally, we derived the total thermal energy needed for heating in the height range between  $\log \tau_c = -1.5$  and  $\log \tau_c = -4.5$  using the following equation

$$E_t(t) = \frac{3k_B}{2} \oint_A \left\{ \int_{Z_1}^{Z_2} n(x, y, z, t) [T(x, y, z, t) - T_{QS}(z, t)] dz \right\} dx dy, \quad (2)$$

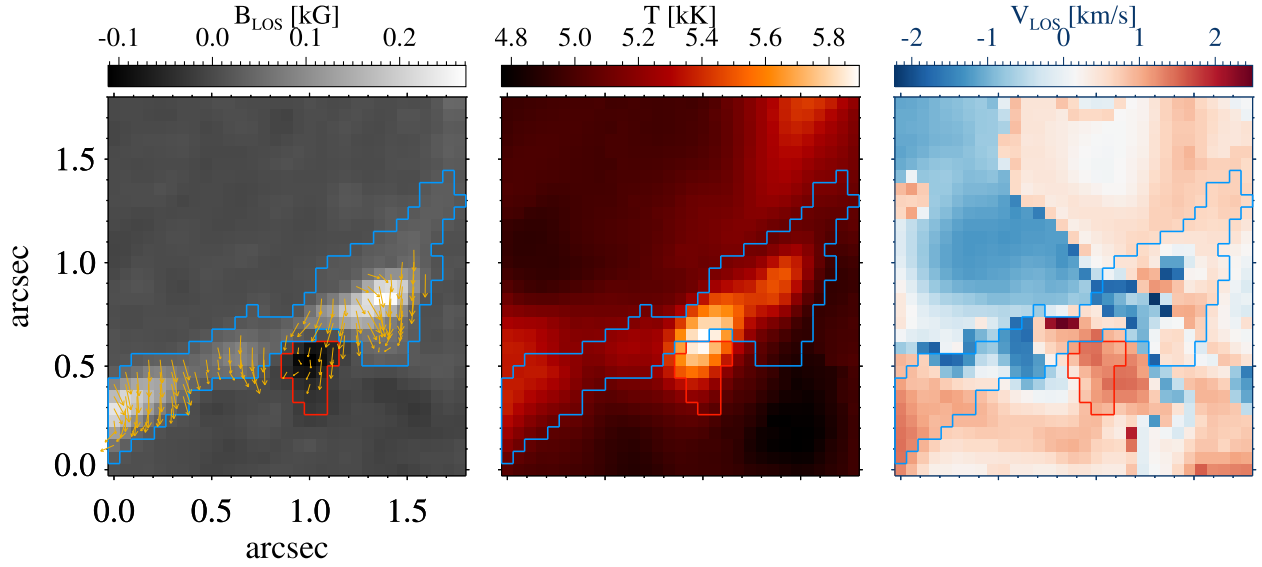
where  $k_B$  is the Boltzmann constant,  $n(x, y, z)$  is the number density, and  $[T(x, y, z, t) - T_{QS}(z, t)]$  is the temperature enhancement at a given  $(x, y, z, t)$  with respect to the mean QS temperature at a given  $z$  and at time  $t$ . From the inversion returned value of density  $\rho(x, y, z, t)$ , we calculated  $n(x, y, z, t)$  as follows:

$$n(x, y, z, t) = \frac{\rho(x, y, z, t)}{[1.66 \times 10^{-24} \times (0.91 + 0.09 \times 4)]}, \quad (3)$$

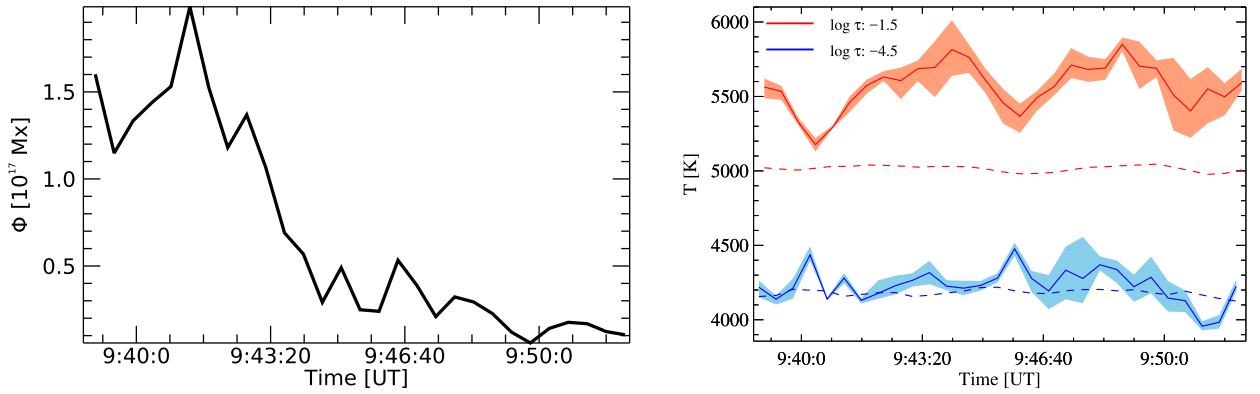
where  $1.66 \times 10^{-24} \text{ g}$  is the atomic mass unit. We note that we considered a mixture of only hydrogen (91 per cent) and helium (9 per cent) and have taken into account that helium is 4 times heavier than hydrogen. In the calculation of  $n(x, y, z, t)$ , the number of electrons is neglected as they are about two orders of magnitude smaller in the photosphere and lower chromosphere where the plasma is only partially ionized. We obtained  $E_t$  in the range of  $[5 \times 10^{23} - 4 \times 10^{25}] \text{ erg}$ . Comparing  $E_b$  and  $E_t$ , it appears that the magnetic energy is sufficient to account for the heating in the range of heights we considered for the evaluation.



**Figure 7.** Plots in red, green, and blue represent values for Fe I, Ca II, and H $\alpha$ , respectively. Left: continuum/wing intensity curves; Right: line-core intensity evolution relative to their respective QS value. The dotted lines in the left panel represent mean QS values for the respective spectral lines.



**Figure 8.** Left to right: maps at  $\log \tau_c = -1.5$  of LOS component of magnetic field vector with the transverse magnetic field component overlotted as arrows, temperature, and LOS Doppler velocity. The red and blue contours outline the negative- and positive-polarity patches, respectively.



**Figure 9.** Left: temporal variation of vertical magnetic flux of the negative-polarity patch at  $\log \tau_c = -1.5$ . We summed the magnetic flux of the pixels within the red contour shown in Fig. 3 to obtain flux at each time frame. Right: Variation of temperature values for the 5 chosen pixels at  $\log \tau_c = -1.5$  (red shaded region) and at  $\log \tau_c = -4.5$  (blue shaded region). The solid red and blue lines represent the mean over the 5-pixel region at respective  $\log \tau_c$  levels. The dashed lines in red and blue represent the mean QS temperatures at the respective  $\log \tau$  values.

### 3.3 Temporal evolution of the physical parameters in vertical slices

To gain a deeper insight into the QSEB analysed in this work, and to present its connection to the magnetic reconnection, we study the physical parameters as a function of time and height ( $z$ ) along the first three slices indicated in Fig. 3 (bottom panel). Our observations show that the detected QSEBs are located on a magnetic element that itself is on an intergranular lane. Magnetic elements are known to possess enhanced temperatures, compared to the QS, in the mid-photosphere (Solanki 1986; Solanki & Brigljevic 1992; Lagg et al. 2010). Moreover, intergranular lanes harbour large downflow velocities in the deep-photosphere that become upflows in the upper photosphere (see Fig. 3 in Borrero & Bellot Rubio 2002). We confirmed these features by calculating the average temperature  $T_0(z)$ , and average LOS velocity  $v_{\text{LOS},0}(z)$  stratifications over regions where  $\|B_{\text{LOS}}(\log \tau_c = -1.5)\| \geq 50$  Gauss in Fig. 3 (second row).

Similar patterns of temperature enhancement and downflow/upflow in the deep/upper photosphere are also seen in the average stratification over the red contour in Fig. 3 where the QSEBs appear. Therefore, in order to isolate the features that uniquely belong to the QSEB phenomenon from those typically occurring in an isolated magnetic element, we plot in Fig. 10 (cut no. 1), Fig. 11 (cut no. 2), and Fig. 12 (cut no. 3) the temperature and LOS velocity along the aforementioned slices in Fig. 3 (bottom panel) but relative to the average, at each height, of the isolated element:  $T(L,z) - T_0(z)$  and  $v_{\text{LOS}}(L,z) - v_0(z)$ . Here,  $L$  refers to the direction of the slices in Fig. 3. The magnetic field (bottom panels in Figs 10 through 12) is not displayed with respect to the isolated magnetic element because individual magnetic features may possess very different values of the magnetic field and therefore an average is not particularly representative. The arrow field in the bottom panels of these figures represents the projection of the magnetic field vector onto the  $(L, z)$ -plane. All panels display the location of the  $\log \tau_c = 0, -1.5$ , and  $-4.5$  in solid, dashed, and dashed-dotted lines, respectively. Regions where  $\log \tau_c > 0$  and  $\log \tau_c < -4.5$  are not shown because the spectral lines do not provide reliable information in those layers.

According to Fig. 10 (upper panel) for cut no. 1, the QSEB event leads to enhanced temperatures, with respect to the isolated element, sometimes as high as 1000 K. These temperature enhancements appear initially below the  $\log \tau_c = -1.5$  level, but they move towards the upper photosphere and low chromosphere as the time progresses. The location of the temperature increase is consistent with the intensity enhancements seen in the continuum/wing/line-core intensity of the different spectral lines (see Fig. 3). Upflows as large as  $v_{\text{los}} \approx -4 \text{ km s}^{-1}$  and downflows of  $\approx 2 \text{ km s}^{-1}$  are seen above and below, respectively, the  $\log \tau_c = -1.5$  level. The magnetic field in the  $(L, z)$ -plane appears continuous: i.e. the arrow field does not present abrupt interruptions.

Cut no. 2 is displayed in Fig. 11. Here, increased temperatures are mostly located above  $\log \tau_c = -1.5$  (top panel). Initially, the LOS velocity (middle panel) displays a similar behavior as in cut no. 1, with upflows/downflows above/below the  $\log \tau_c = -1.5$  level. However, at some point, the velocity pattern drastically shifts: downflows turn into upflows and vice versa, while the overall magnitude of the flows increases: both upflow and downflow are now clearly larger than  $5 \text{ km s}^{-1}$ . This change is accompanied by a sudden change in the connectivity of the magnetic field lines in the bottom panel: on the fifth frame, the component of the magnetic field along the  $L$ -direction presents an abrupt jump around  $L \approx 0.18 \text{ Mm}$  with  $B_L$  of opposite signs facing each other. Along this thin vertical

strip where field line disconnection happens, we observe reduced Doppler velocity compared to the nearby locations. In addition, a reduction in temperature in comparison to the previous frame also occurs.

Cut no. 3, displayed in Fig. 12, is similar to cut no. 2 in that the velocity pattern of extreme downflows above  $\log \tau_c = -1.5$  and upflows below this level are present, albeit from the start. A sudden change in the connectivity of the field lines in the  $(L, z)$ -plane is also seen on the third frame, again with opposite  $B_L$  facing each other at around  $L \approx 0.2 \text{ Mm}$ .

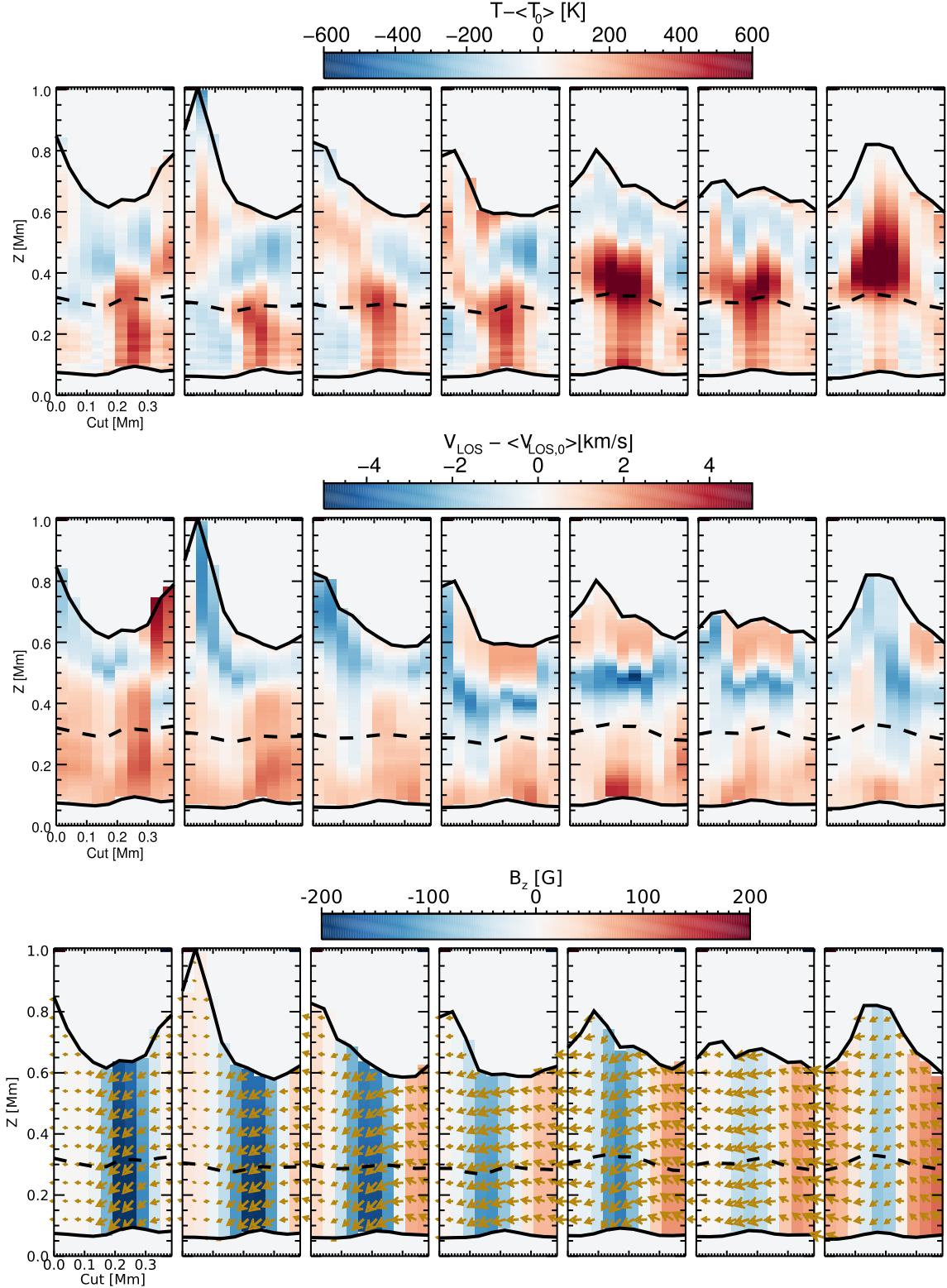
The velocity pattern of upflows/downflows above/below the  $\log \tau_c = -1.5$  level (see all panels on the second row of Fig. 10) is consistent with the bi-directional jets that appear during and after reconnection (Pontin & Priest 2022). The inverse pattern of downflows/upflows above/below the  $\log \tau_c = -1.5$  level (see fourth through seventh columns on the middle row of Fig. 11) does not fit, at first glance, with the idea of diverging jets caused by magnetic reconnection. However, we cannot rule out (because our inversions are not reliable there) that reconnection happens, at some point during the time evolution above the lower chromosphere (i.e.  $\log \tau_c < -4.5$ ) leading to the formation of strong downflows between  $\log \tau_c \in [-1.5, -4.5]$ . In fact, there are some hints that this might actually be happening in cut no. 2 (Fig. 11) as there seem to be strong temperature enhancements very close to, but right below,  $\log \tau_c \approx -4.5$ .

From the observed temperature enhancements, we surmise that there are multiple instances of magnetic reconnection happening at different heights, either simultaneously or at different times, and that the velocity maps display complex patterns indicating that the diverging jets occurring as a result of those reconnection events superpose each other. The changes in the flow velocity appear to be correlated with a sudden change in the connectivity of the field lines. In case magnetic field connectivity is not affected, the flow pattern also remains unchanged.

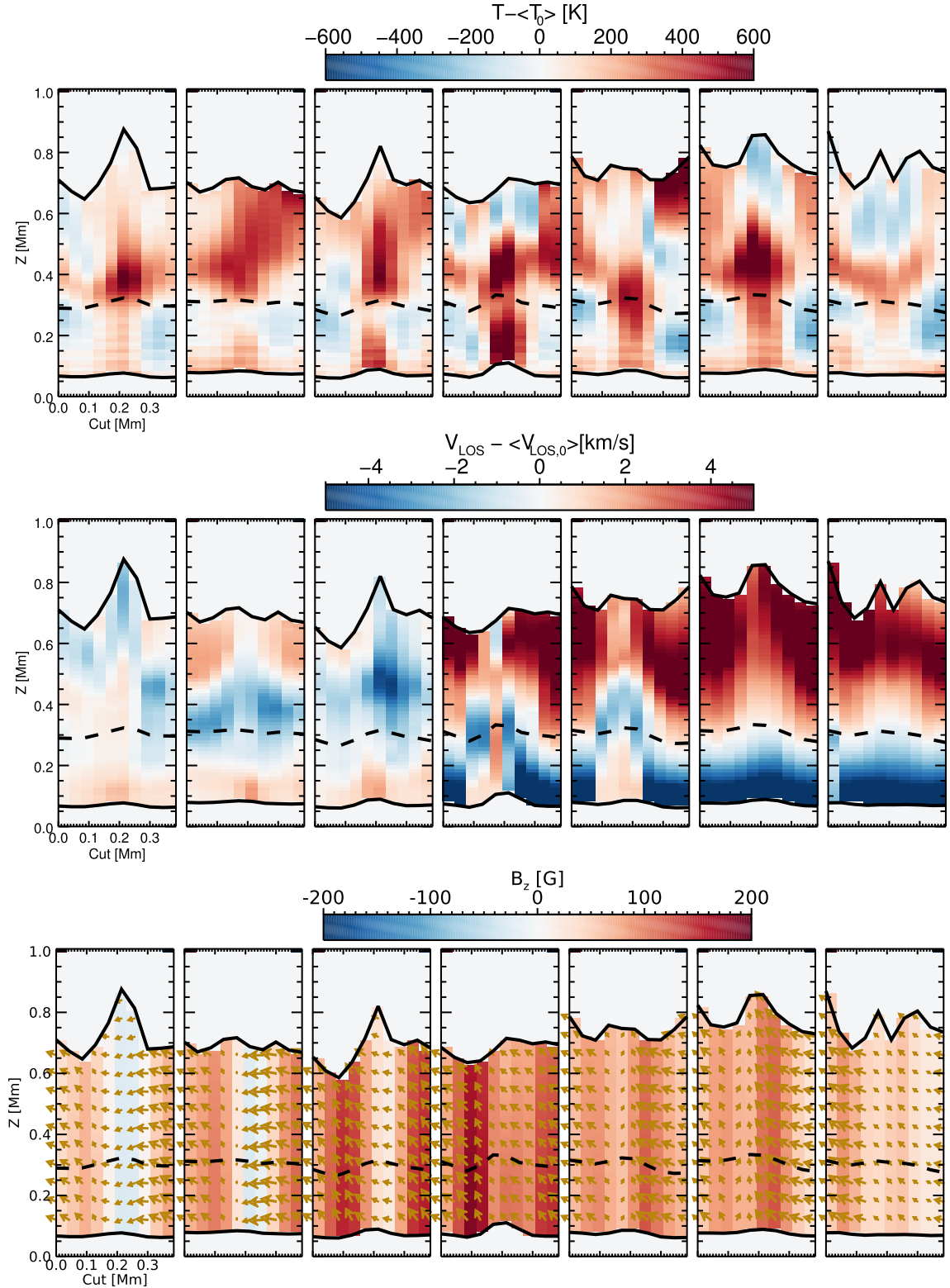
Concerning the geometry of the magnetic field, it is not possible, with our current observations, to establish whether the QSEB presented in this work is produced by magnetic reconnection in a U (Hansteen et al. 2017, 2019) or  $\Omega$  loop (Danilovic 2017). This is due to the very small linear-polarization signals in the Ca II line (see Fig. 4) that make it impossible to determine whether the horizontal fields are located mostly in the high or deep photosphere.

## 4 SUMMARY

In this work, we have analysed a reconnection-related cancellation event and an associated QSEB observed with the 1-m Solar Swedish Telescope. The QSEB is initially detected above a negative-polarity region but is observed later on the nearby positive-polarity patch as well. The event presents many features that had already been previously reported (Shetye et al. 2018) such as enhanced intensity in the wing of Ca II 854 nm line and of H $\alpha$ , but enhanced line-core intensity only in the former spectral line. In addition, we find signatures related to the QSEB in the continuum and line-core intensity of the Fe I line at 617 nm. Despite EBs and QSEBs being widely regarded as occurring in the photosphere (Watanabe et al. 2011; Ruppe van der Voort et al. 2016), this is the first time its signatures are seen close to the photospheric continuum at optical wavelengths (i.e.  $\log \tau_c = 0$ , cf. Rutten 2016). In fact, our observations clearly show that both continuum and line-core intensity in Fe I at 617 nm dramatically increase during the event, with the line-core intensity reaching higher values than the QS continuum intensity in this spectral line (see left panel Fig. 6). This can only happen if the



**Figure 10.** From top to bottom: Evolution of temperature, Doppler velocity, and  $B_z$  with overlaid arrows representing the transverse magnetic field. In all the rows, the fourth map represents the  $Z$  stratification of the respective physical parameter along the cut shown next to  $H\alpha$  blue-wing intensity enhancement denoted as 1 in Fig. 3; zero on the X-axis represents the lower-left point of the cut. The maps before and after the fourth one are along the same cut but for time steps behind and ahead of that of the fourth one. Time runs from 9:42:16 to 9:45:05 UT (left to right). Solid, dashed, and dash-dotted black lines represent  $\log \tau_c = 0, -1.5,$  and  $-4.5$  lines, respectively.

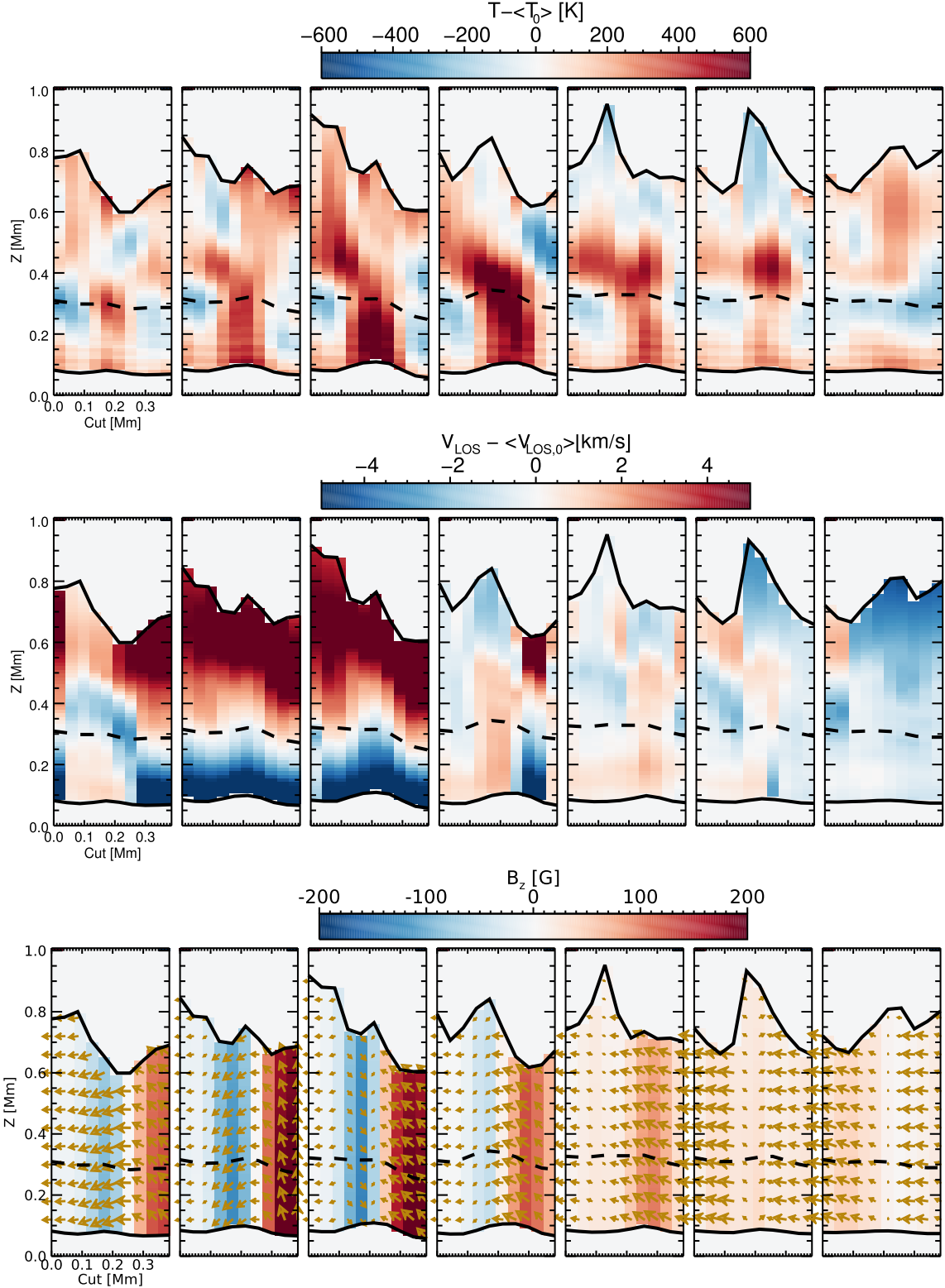


**Figure 11.** Same as Fig. 10 but for the cut denoted as 2 (third column, final panel) in Fig. 3. Time is from 9:45:33 to 9:48:22 UT (left to right). Solid, dashed, and dash-dotted black lines represent  $\log \tau_c = 0$ ,  $-1.5$ , and  $-4.5$  lines, respectively.

temperature during the QSEB at  $\log \tau_c = -1.5$  (approximate height of formation of the line core) is larger than the temperature on the QS at  $\log \tau_c = 0$ :  $T_{EB}(\log \tau_c = -1.5) > T_{QS}(\log \tau_c = 0) \approx 6400$  K. This does not mean that the Fe I line at 617 nm turns into emission

though, as its continuum intensity also greatly increases during the QSEB event.

We have further analysed the time series of the spectropolarimetric data during this event in order to infer the physical parameters, such



**Figure 12.** Same as Fig. 10, but for the third cut shown in the fourth column of the final row in Fig. 3. In all the maps, solid, dashed, and dash-dotted black lines represent  $\log \tau_c = 0, -1.5,$  and  $-4.5$  lines, respectively.

as temperature, LOS velocity, magnetic field, etc., as a function of  $(x, y, z)$ , and time  $t$ , by employing the FIRTEZ-dz inversion code (Pastor Yabar et al. 2019; Borrero et al. 2021) using non-LTE radiative transfer. The temperature shows recurrent enhancements of

up to 1000 K with respect to an unperturbed magnetic element. The enhancements are seen at a variety of heights, anywhere from the deep photosphere ( $\log \tau_c \approx 0$ ) to the lower chromosphere ( $\log \tau_c \approx -4.5$ ). Enhanced temperatures, as well as enhanced intensities in

the Fe I, Ca II, and H $\alpha$  lines, occur several times during the event (Figs 10, 11, 12, and 3), thus indicating several episodic temperature rises within the lifetime of the event.

The LOS velocity shows the common pattern of bi-directional jets commonly ascribed to magnetic reconnection (Pontin & Priest 2022): large upflows in the mid-upper photosphere and lower chromosphere and large downflows in the deep photosphere. This has already been reported in EBs (Watanabe et al. 2011). We have inferred, however, that the velocity pattern dramatically changes and the strength of the flows increases whenever the connectivity of the field lines undergoes a sudden disconnection. These results provide the strongest evidence so far for magnetic reconnection as being the cause of QSEB, just as is the case for EBs (Nelson et al. 2013).

Magnetic reconnection as the cause of EBs nearby active regions had already been proposed and explored, among others, by Reid et al. (2016). To explore this possibility in QSEBs, we have studied the amount of thermal energy required to heat up the atmosphere from the temperatures in the QS to the inferred temperatures and compared it to the available magnetic energy that can be potentially converted into heat via Joule dissipation. Our energy estimations show that the magnetic energy released during the flux cancellation can account for heating in the range of heights considered in this investigation, thus supporting magnetic reconnection as a potential driver for QSEBs.

## ACKNOWLEDGEMENTS

The Swedish 1-m Solar Telescope is operated on the island of La Palma by the Institute for Solar Physics of Stockholm University in the Spanish Observatorio del Roque de los Muchachos of the Instituto de Astrofísica de Canarias. The Institute for Solar Physics is supported by a grant for research infrastructures of national importance from the Swedish Research Council (registration number 2017-00625). This project has received funding from the European Research Council (ERC) under the European Union's Horizon 2020 research and innovation program (SUNMAG, grant agreement 759548). AJK thanks Philip Lindner for collecting the data as part of a back-up proposal under the Trans-National Access Programme of SOLARNET, and Oleksii Andriienko for performing the data reconstruction with SSTRED.

## DATA AVAILABILITY

The data underlying this article will be shared on reasonable request to the corresponding author.

## REFERENCES

- A. N. Tikhonov, Goncharko A. V., V. V. Stepanov, Yagola A. G., 1995, *Numerical Methods for the Solution of Ill-Posed Problems*. Springer, Dordrecht
- Anstee S. D., O'Mara B. J., 1995, *MNRAS*, 276, 859
- Barklem P. S., O'Mara B. J., 1997, *MNRAS*, 290, 102
- Barklem P. S., O'Mara B. J., Ross J. E., 1998, *MNRAS*, 296, 1057
- Bello González N., Danilovic S., Kneer F., 2013, *A&A*, 557, A102
- Borrero J. M., Bellot Rubio L. R., 2002, *A&A*, 385, 1056
- Borrero J. M., Pastor Yabar A., Ruiz Cobo B., 2021, *A&A*, 647, A190
- Cheung M. C., 2008, AGU Spring Meeting Abstracts. p. SP51D-04
- Danilovic S., 2017, *A&A*, 601, A122
- da Silva Santos J. M., de la Cruz Rodríguez J., Leenaarts J., 2018, *A&A*, 620, A124

- de la Cruz Rodríguez J., Leenaarts J., Danilovic S., Uitenbroek H., 2019, *A&A*, 623, A74
- de la Cruz Rodríguez J., Löfdahl M. G., Sütterlin P., Hillberg T., Rouppe van der Voort L., 2015, *A&A*, 573, A40
- de la Cruz Rodríguez J., Socas-Navarro H., Carlsson M., Leenaarts J., 2012, *A&A*, 543, A34
- de Wijn A. G., de la Cruz Rodríguez J., Scharmer G. B., Sliepen G., Sütterlin P., 2021, *AJ*, 161, 89
- Edlén B., Risberg P., 1956, *Ark. Fys.*, 10, 553
- Ellerman F., 1917, *ApJ*, 46, 298
- Frutiger C., Solanki S. K., Fligge M., Bruls J. H. M. J., 1999, in Nagendra K. N., Stenflo J. O. eds, *Astrophysics and Space Science Library Vol. 243, Polarization*. Springer, Dordrecht, p. 281
- Georgoulis M. K., 2005, *ApJ*, 629, L69
- Georgoulis M. K., Rust D. M., Bernasconi P. N., Schmieder B., 2002, *ApJ*, 575, 506
- Gingerich O., Noyes R. W., Kalkofen W., Cuny Y., 1971, *Sol. Phys.*, 18, 347
- Hansteen V. H., Archontis V., Pereira T. M. D., Carlsson M., Rouppe van der Voort L., Leenaarts J., 2017, *ApJ*, 839, 22
- Hansteen V., Ortiz A., Archontis V., Carlsson M., Pereira T. M. D., Bjørgen J. P., 2019, *A&A*, 626, A33
- Jefferies J. T., Mickey D. L., 1991, *ApJ*, 372, 694
- Joshi J., Rouppe van der Voort L. H. M., de la Cruz Rodríguez J., 2020, *A&A*, 641, L5
- Kaithakkal A. J., Solanki S. K., 2019, *A&A*, 622, A200
- Kaithakkal A. J., Borrero J. M., Fischer C. E., Dominguez-Tagle C., Collados M., 2020, *A&A*
- Lagg A. et al., 2010, *ApJ*, 723, L164
- Leenaarts J., Carlsson M., Rouppe van der Voort L., 2012, *ApJ*, 749, 136
- Löfdahl M. G., Hillberg T., de la Cruz Rodríguez J., Vissers G., Andriienko O., Scharmer G. B., Haugan S. V. H., Fredvik T., 2021, *A&A*, 653, A68
- Matsumoto T. et al., 2008, *PASJ*, 60, 577
- Milić I., van Noort M., 2018, *A&A*, 617, A24
- Nave G., Johansson S., Learner R. C. M., Thorne A. P., Brault J. W., 1994, *ApJS*, 94, 221
- Neckel H., 1999, *Sol. Phys.*, 184, 421
- Nelson C. J., Shelyag S., Mathioudakis M., Doyle J. G., Madjarska M. S., Uitenbroek H., Erdélyi R., 2013, *ApJ*, 779, 125
- Nelson C. J., Freij N., Reid A., Oliver R., Mathioudakis M., Erdélyi R., 2017, *ApJ*, 845, 16
- Pastor Yabar A., Borrero J. M., Ruiz Cobo B., 2019, *A&A*, 629, A24
- Pontin D. I., Priest E. R., 2022, *Liv. Rev. Solar Phys.*, 19, 1
- Reid A., Mathioudakis M., Doyle J. G., Scullion E., Nelson C. J., Henriques V., Ray T., 2016, *ApJ*, 823, 110
- Rouppe van der Voort L. H. M., Rutten R. J., Vissers G. J. M., 2016, *A&A*, 592, A100
- Ruiz Cobo B., del Toro Iniesta J. C., 1992, *ApJ*, 398, 375
- Rutten R. J., 2016, *A&A*, 590, A124
- Rutten R. J., Vissers G. J. M., Rouppe van der Voort L. H. M., Sütterlin P., Vitas N., 2013, *J. Phys.: Conf. Ser.*, 440, 012007
- Scharmer G. B., 2006, *A&A*, 447, 1111
- Scharmer G. B., Bjelksjö K., Korhonen T. K., Lindberg B., Petterson B., 2003, in Keil S. L., Avakyan S. V., eds, *Proc. SPIE Conf. Ser. Vol. 4853, Innovative Telescopes and Instrumentation for Solar Astrophysics*. SPIE, Bellingham, p. 341
- Scharmer G. B. et al., 2008, *ApJ*, 689, L69
- Shchukina N. G., Sukhorukov A. V., Trujillo Bueno J., 2017, *A&A*, 603, A98
- Shetye J., Shelyag S., Reid A. L., Scullion E., Doyle J. G., Arber T. D., 2018, *MNRAS*, 479, 3274
- Shine R. A., Linsky J. L., 1974, *Sol. Phys.*, 39, 49
- Socas-Navarro H., Ruiz Cobo B., Trujillo Bueno J., 1998, *ApJ*, 507, 470
- Socas-Navarro H., Trujillo Bueno J., Ruiz Cobo B., 2000, *ApJ*, 530, 977
- Socas-Navarro H., de la Cruz Rodríguez J., Asensio Ramos A., Trujillo Bueno J., Ruiz Cobo B., 2015, *A&A*, 577, A7
- Solanki S. K., 1986, *A&A*, 168, 311
- Solanki S. K., Brigljevic V., 1992, *A&A*, 262, L29

- van Noort M., Rouppe van der Voort L., Löfdahl M. G., 2005, *Sol. Phys.*, 228, 191
- Vernazza J. E., Avrett E. H., Loeser R., 1981, *ApJS*, 45, 635
- Vissers G. J. M., Rouppe van der Voort L. H. M., Rutten R. J., 2013, *ApJ*, 774, 32
- Vissers G. J. M., de la Cruz Rodríguez J., Libbrecht T., Rouppe van der Voort L. H. M., Scharmer G. B., Carlsson M., 2019, *A&A*, 627, A101
- Watanabe H. et al., 2008, *ApJ*, 684, 736
- Watanabe H., Vissers G., Kitai R., Rouppe van der Voort L., Rutten R. J., 2011, *ApJ*, 736, 71

Supplementary data are available at *MNRAS* online.

**suppl.data**

Please note: Oxford University Press is not responsible for the content or functionality of any supporting materials supplied by the authors. Any queries (other than missing material) should be directed to the corresponding author for the article.

This paper has been typeset from a  $\text{\TeX/L\AA\TeX}$  file prepared by the author.